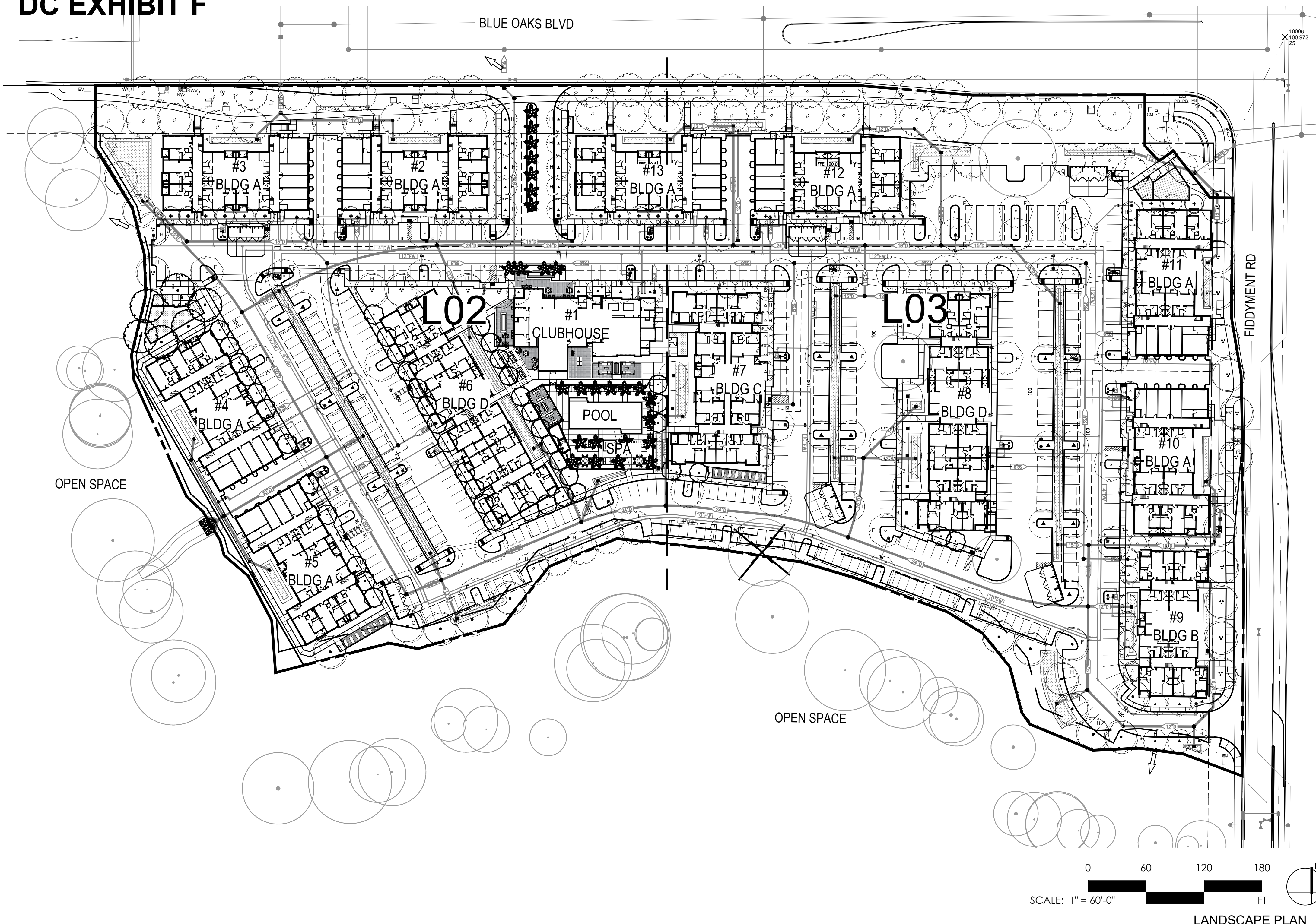


# DC EXHIBIT F



TREES	BOTANICAL / COMMON NAME	CONT	WAT
	Acer rubrum 'Bowhall' Bowhall Maple	24"box	Med
	Acer rubrum 'October Glory' October Glory Red Maple	24"box	Med
	Elaeocarpus decipiens Japanese Blueberry Tree	24"box	Med
	Existing Tree	--	--
	Lagerstroemia x 'Natchez' Crape Myrtle	24"box	Low
	Nyssa sylvatica 'Green Gable' TM Black Gum	24"box	Med
	Olea europaea 'Wilsonii' Wilson Olive	24"box	Low
	Pistacia chinensis 'Kieth Davey' Kieth Davey Chinese Pistache	36"box	Low
	Platanus x acerifolia London Plane Tree	24"box	Low
	Quercus lobata Valley Oak	48"box	Low
	Quercus wislizenii Interior Live Oak	24"box	Low
	Ulmus japonica x wilsoniana 'Morton' TM Accolade Elm	24"box	Med
	Washingtonia filifera California Fan Palm	14' BTH	Low
	Zelkova serrata 'Green Vase' Green Vase Sawleaf Zelkova	24"box	Med

Tree Species	Tree Size	Coverage	Qty	Area	Shade Total
Acer rubrum 'October Glory'	35'-30'	Full	65	962	62,530
Pistacia chinensis 'Kieth Davey'	Half		26	481	12,506
Quercus wislizenii	Quarter		6	240	1,440
Zelkova serrata 'Green Vase'				<b>Total</b>	<b>76,476</b>
	30'-25'	Full	0	707	0
		Half	0	354	0
		Quarter	0	177	0
				<b>Total</b>	<b>0</b>
Acer rubrum 'Bowhall'	25'-20'	Full	0	791	0
Nyssa sylvatica	Half		17	246	4,182
Olea europaea 'Wilsonii'	Quarter		3	123	369
				<b>Total</b>	<b>4,551</b>
Lagerstorema	20'-15'	Full	0	314	0
		Half	0	157	0
		Quarter	17	79	1,343
				<b>Total</b>	<b>1,343</b>
Existing Tree Canopy		Full	4499	100.00%	4,499
		Half	0	50.00%	
		Quarter	3848	25.00%	962
					3673
				<b>Total</b>	<b>5,461</b>
				<b>Total Tree Shaded Area Provided</b>	<b>87,831</b>
				<b>Total Carport Area Provided</b>	<b>33,213</b>
				<b>Percent of Parking Shaded</b>	<b>56.8%</b>
				<b>Total Parking Area</b>	<b>213,077</b>



LANDSCAPE PLAN  
1" = 60'-0"

**WATER EFFICIENT LANDSCAPE ORDINANCE:**

"I have complied with the criteria of the Water Efficient Landscape Ordinance and applied such criteria for the efficient use of water in the landscape design plan."

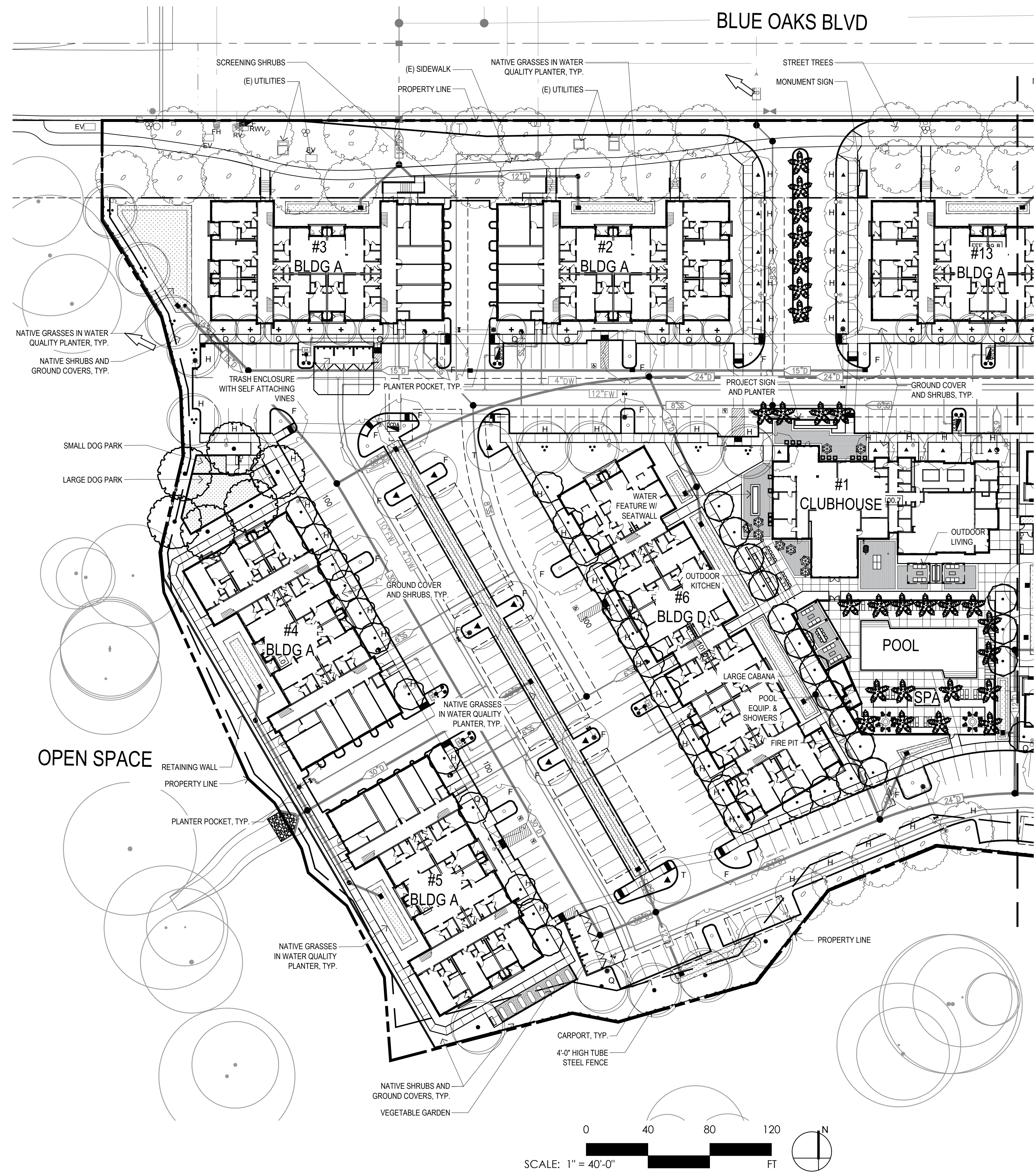
Applicant Signature \_\_\_\_\_ License Number \_\_\_\_\_ Date \_\_\_\_\_

**LANDSCAPE NOTES:**

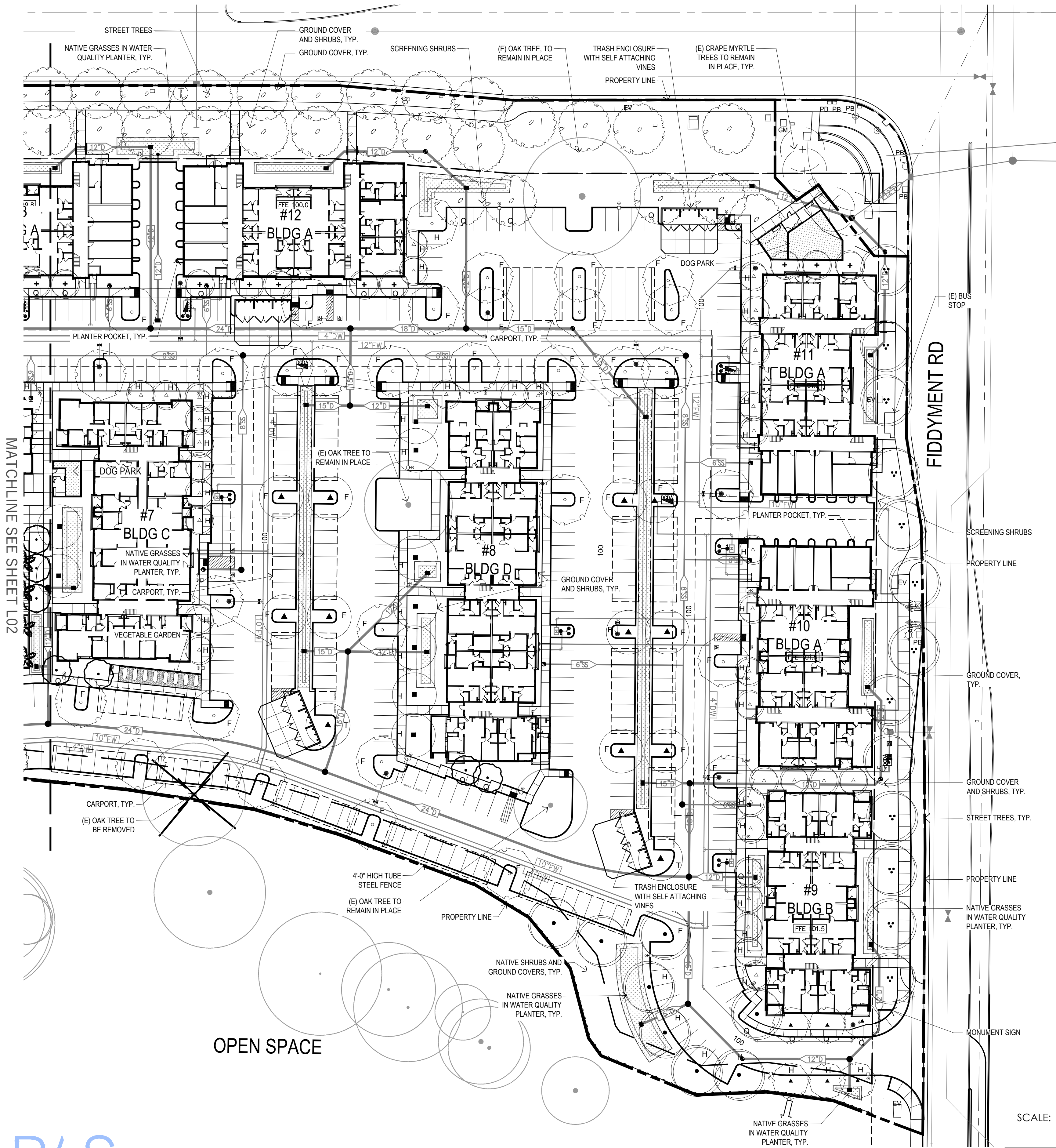
1. ALL PLANTERS TO BE IRRIGATED USING IN-LINE SUBSURFACE DRIP TUBING EXCEPT FOR LAWN AREAS.
2. ALL SPRAY IRRIGATION TO BE LAID OUT TO AVOID OVER SPRAY.
3. ALL PLANTER TO BE TOP DRESSED WITH 3" OR MULCH EXCEPT FOR LAWN AREAS.
4. INSTALL TREE ROOT BARRIERS FOR TREES WITHIN 4'-0" OF CONCRETE PAVING OR CURB.

NOTES  
NTS

PARKING SHADE TREE CALCS  
NTS



TREES	BOTANICAL / COMMON NAME	CONT	WATER USE
	Acer rubrum 'Bowhall' Bowhall Maple	24"box	Med
	Acer rubrum 'October Glory' October Glory Red Maple	24"box	Med
	Elaeocarpus decipiens Japanese Blueberry Tree	24"box	Med
	Existing Tree	--	--
	Lagerstroemia x 'Natchez' Crape Myrtle	24"box	Low
	Nyssa sylvatica 'Green Gable' TM Black Gum	24"box	Med
	Olea europaea 'Wilsonii' Wilson Olive	24"box	Low
	Pistacia chinensis 'Kieth Davey' Kieth Davey Chinese Pistache	36"box	Low
	Platanus x acerifolia London Plane Tree	24"box	Low
	Quercus lobata Valley Oak	48"box	Low
	Quercus wislizenii Interior Live Oak	24"box	Low
	Ulmus japonica x wilsoniana 'Morton' TM Accolade Elm	24"box	Med
	Washingtonia filifera California Fan Palm	14' BTH	Low
	Zelkova serrata 'Green Vase' Green Vase Sawleaf Zelkova	24"box	Med
<b>SHRUBS</b>		<b>CONT</b>	<b>WATER USE</b>
	Callistemon viminalis 'Better John' Dwarf Weeping Bottle Brush	5 gal	Low
	Chondropetalum tectorum Cape Rush	5 gal	Med
	Cistus x 'Grayswood Pink' Rock Rose	5 gal	Med
	Dietes bicolor Fortnight Lily	5 gal	Low
	Galvezia speciosa Island Bush Snapdragon	5 gal	Low
	Gardenia jasminoides 'August Beauty' Gardenia	5 gal	Med
	Ilex x 'RutHol 1' TM Emerald Colonnade Holly	5 gal	Med
	Kniphofia x 'Lemon Popsicle' Lemon Popsicle Dwarf Hot Poker	5 gal	Low
	Mahonia x 'Soft Caress' Soft Caress Mahonia	1 gal	Low
	Nandina domestica 'Lemon Lime' Lemon Lime Nandina	5 gal	Low
	Pittosporum tenuifolium 'Golf Ball' Golf Ball Tawhiwhi	5 gal	Med
	Ribes nevadense Sierra Currant	1 gal	Low
	Rosa x 'Meizorland' TM White Drift Groundcover Rose	5 gal	Med
<b>VINE</b>		<b>CONT</b>	<b>WATER USE</b>
	Parthenocissus tricuspidata 'Veitchii' Boston Ivy	5 gal	Med
<b>GROUND COVERS</b>		<b>CONT</b>	<b>WATER USE</b>
	Agapanthus x 'Mood Indigo' Mood Indigo African Lily	1 gal	Med
	Baccharis pilularis 'Twin Peaks #2' Twin Peaks #2 Coyote Brush	1 gal	Low
	Bulbine frutescens 'Hallmark' Stalked Bulbine	1 gal	Low
	Dianella revoluta 'DR5000' TM Little Rev Flax Lily	1 gal	Low
	Heuchera x 'Cherry Cola' Cherry Cola Coral Bells	1 gal	Med
	Lomandra longifolia 'Platinum Beauty' Variegated Dwarf Mat Grass	1 gal	Low
	Myoporum parvifolium 'Pink' Trailing Myoporum	1 gal	Low
	Native Preservation Native Sod	sod	Low
	Zauschneria californica California Fuchsia	1 gal	Low
			<b>SPACING</b>
			30" o.c.
			48" o.c.
			36" o.c.
			24" o.c.
			18" o.c.
			36" o.c.
			48" o.c.
			36" o.c.



TREES	BOTANICAL / COMMON NAME	CONT	WAT
	Acer rubrum 'Bowhall' Bowhall Maple	24"box	Med
	Acer rubrum 'October Glory' October Glory Red Maple	24"box	Med
	Elaeocarpus decipiens Japanese Blueberry Tree	24"box	Med
	Existing Tree	--	--
	Lagerstroemia x 'Natchez' Crape Myrtle	24"box	Low
	Nyssa sylvatica 'Green Gable' TM Black Gum	24"box	Med
	Olea europaea 'Wilsonii' Wilson Olive	24"box	Low
	Pistacia chinensis 'Kieth Davey' Kieth Davey Chinese Pistache	36"box	Low
	Platanus x acerifolia London Plane Tree	24"box	Low
	Quercus lobata Valley Oak	48"box	Low
	Quercus wislizenii Interior Live Oak	24"box	Low
	Ulmus japonica x wilsoniana 'Morton' TM Accolade Elm	24"box	Med
	Washingtonia filifera California Fan Palm	14' BTH	Low
	Zelkova serrata 'Green Vase' Green Vase Sawleaf Zelkova	24"box	Med
<b>SHRUBS</b>	<b>CONT</b>	<b>WATER USE</b>	
Callistemon viminalis 'Better John'	5 gal	Low	
Dwarf Weeping Bottle Brush			
Chondropetalum tectorum	5 gal	Med	
Cape Rush			
Cistus x 'Grayswood Pink'	5 gal	Med	
Rock Rose			
Dietes bicolor	5 gal	Low	
Fortnight Lily			
Galvezia speciosa	5 gal	Low	
Island Bush Snapdragon			
Gardenia jasminoides 'August Beauty'	5 gal	Med	
Gardenia			
Ilex x 'RutHol 1' TM	5 gal	Med	
Emerald Colonnade Holly			
Kniphofia x 'Lemon Popsicle'	5 gal	Low	
Lemon Popsicle Dwarf Hot Poker			
Mahonia x 'Soft Caress'	1 gal	Low	
Soft Caress Mahonia			
Nandina domestica 'Lemon Lime'	5 gal	Low	
Lemon Lime Nandina			
Pittosporum tenuifolium 'Golf Ball'	5 gal	Med	
Golf Ball Tawhiwhi			
Ribes nevadense	1 gal	Low	
Sierra Currant			
Rosa x 'Meizorland' TM	5 gal	Med	
White Drift Groundcover Rose			
<b>VINE</b>	<b>CONT</b>	<b>WATER USE</b>	
Parthenocissus tricuspidata 'Veitchii'	5 gal	Med	
Boston Ivy			
<b>GROUND COVERS</b>	<b>CONT</b>	<b>WATER USE</b>	<b>SPAC</b>
Agapanthus x 'Mood Indigo'	1 gal	Med	30" o
Mood Indigo African Lily			
Baccharis pilularis 'Twin Peaks #2'	1 gal	Low	48" o
Twin Peaks #2 Coyote Brush			
Bulbine frutescens 'Hallmark'	1 gal	Low	36" o
Stalked Bulbine			
Dianella revoluta 'DR5000' TM	1 gal	Low	24" o
Little Rev Flax Lily			
Heuchera x 'Cherry Cola'	1 gal	Med	18" o
Cherry Cola Coral Bells			
Lomandra longifolia 'Platinum Beauty'	1 gal	Low	36" o
Variegated Dwarf Mat Grass			
Myoporum parvifolium 'Pink'	1 gal	Low	48" o
Trailing Myoporum			
Native Preservation	sod	Low	
Native Sod			
Zauschneria californica	1 gal	Low	36" o
California Fuchsia			

